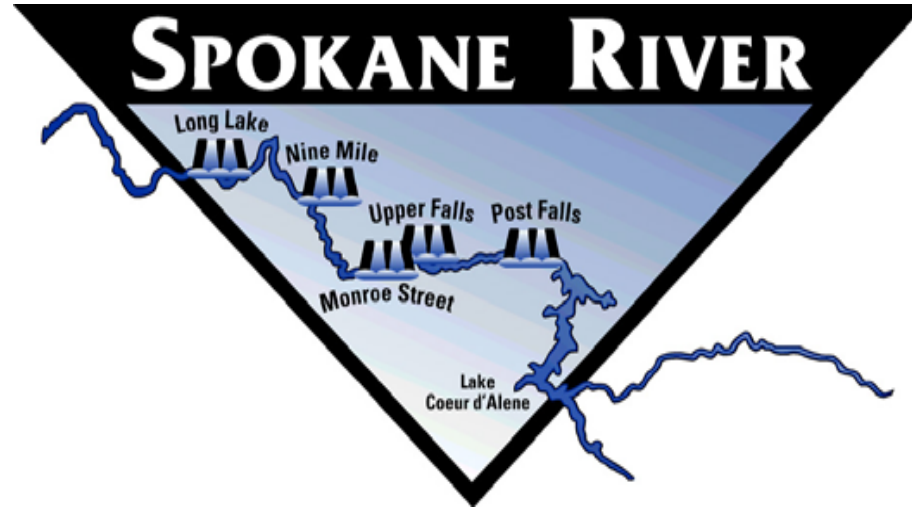


The Spokane River Project & WQ Issues

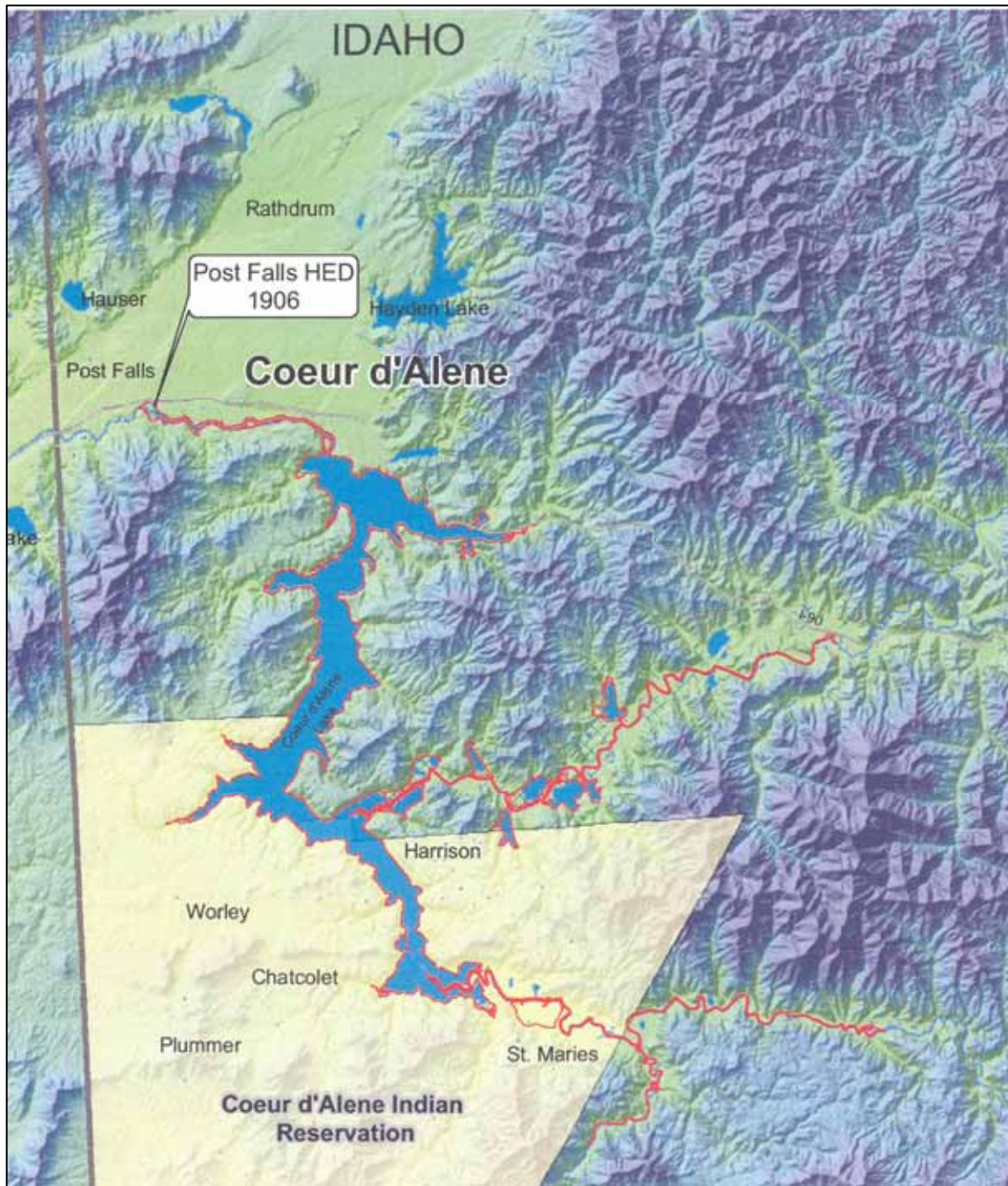


Northwest Hydroelectric Association

February 22, 2007

Avista Corp.'s Hydroelectric Projects





WQ Issues

- Metals
- Erosion/Sediment transport
- Nutrients
- Dissolved Oxygen
- Temperature
- TDG
- Flows
- Aesthetics

WQ Processes

- Superfund
- TMDL
- Watershed Planning
- Bi-state aquifer study
- 4(e) mandatory conditions
- Clean Water Act certification



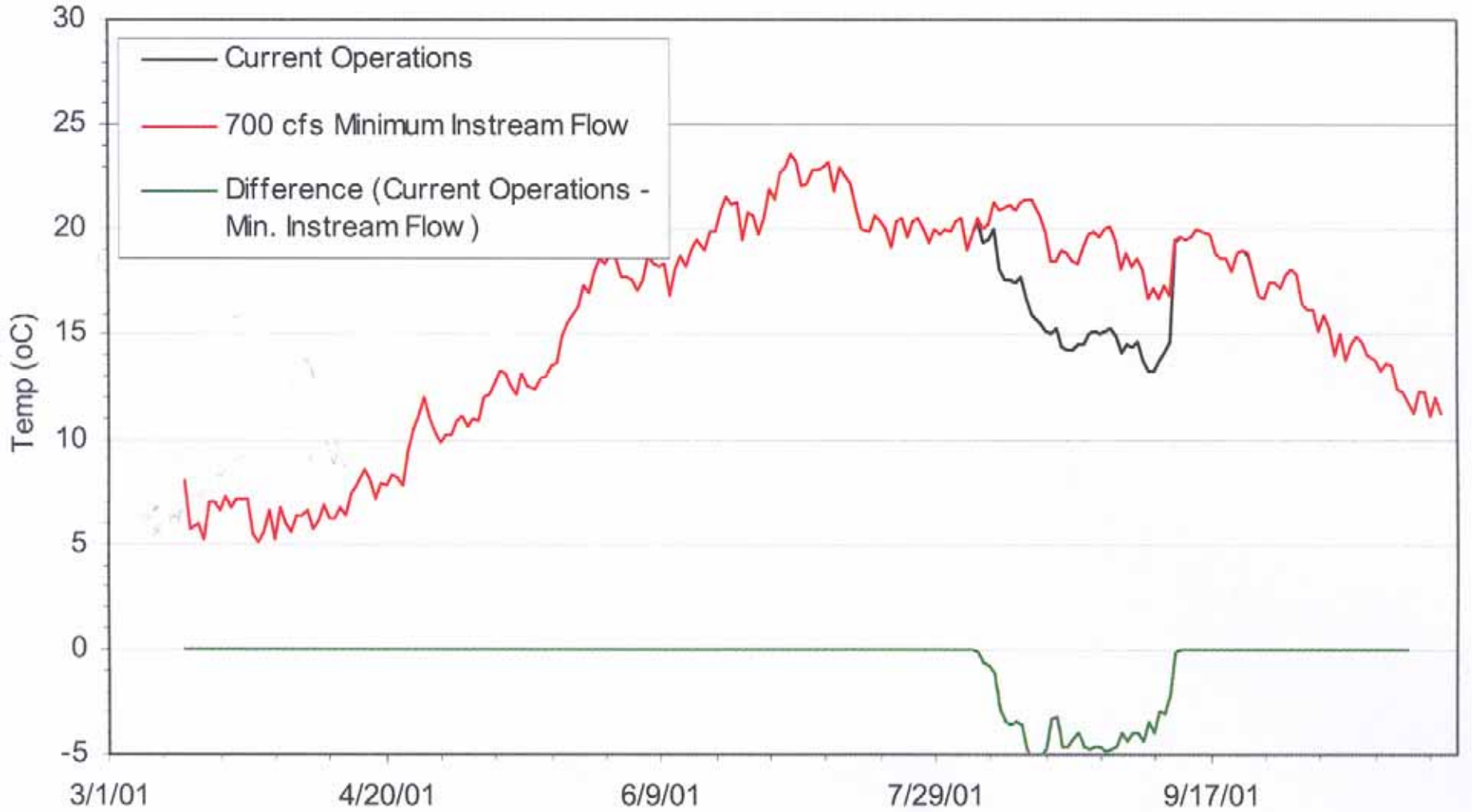
Efforts at Resolving Minimum Flows

- ALP, 2002-2005
- Involvement in other processes
- Further settlement discussions
- EPA involvement
- FERC DEIS
- 401 process

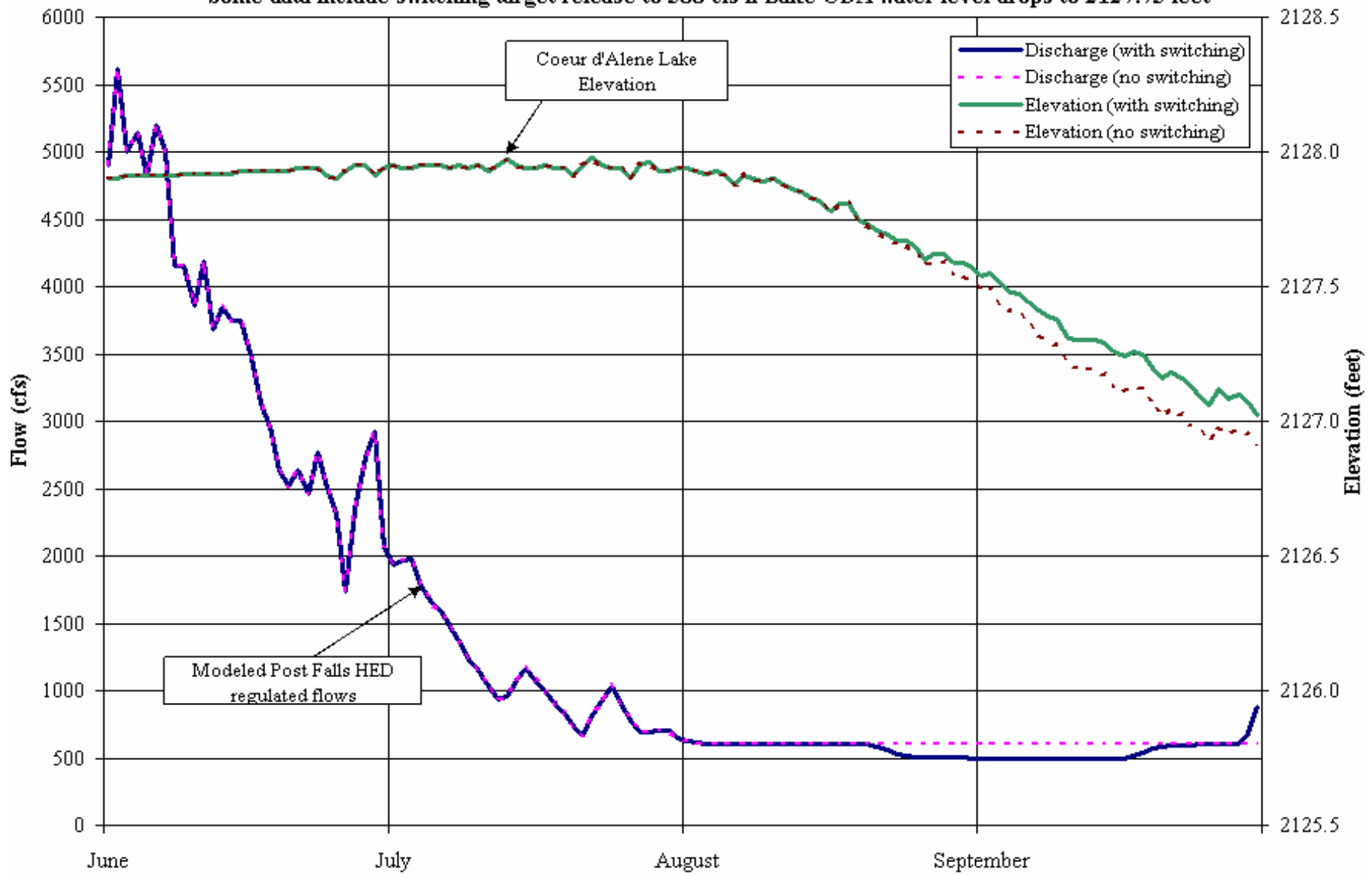
Table AIR 6-1. Weighted Useable Area (WUA) for Juvenile II And Adult Rainbow Trout for the Barker Road, Corbin Park, and McGuire Park Sites Combined. WUA Values are Based on the <800 cfs Regression. WUA Units are Ft²/1000 ft. Stream Length. The Normalized WUA Values Reflect the Two Regression Analyses.

Post Falls Q (cfs)	WUA		Normalized WUA (% of maximum value)	
	Juv-II	Adult	Juv-II + Adult (<800 cfs)	Juv-II + Adult (<3,500 cfs)
400	48,249	27,693	91	98
450	50,261	28,982	95	99
500	50,998	30,364	98	100
550	50,476	31,647	99	100
600	49,386	32,939	100	100
650	48,100	33,943	100	100
700	46,782	34,856	100	99
750	45,331	35,462	99	98
800	44,056	36,050	99	97

Headwaters of Upriver Reservoir, RM 84.6
Daily Maximum Model Water Temperature



Modeled Post Falls HED Discharge and Resulting Coeur d'Alene Lake Elevation
Minimum Post Falls HED Target Release of 600 cfs June 1 - September 30
Some data include switching target release to 500 cfs if Lake CDA water level drops to 2127.75 feet



2001

Lessons Learned

- “Agreement” is a funny word
- “Science” may or may not matter
- Perception can be king
- It’s not over til it’s over

