

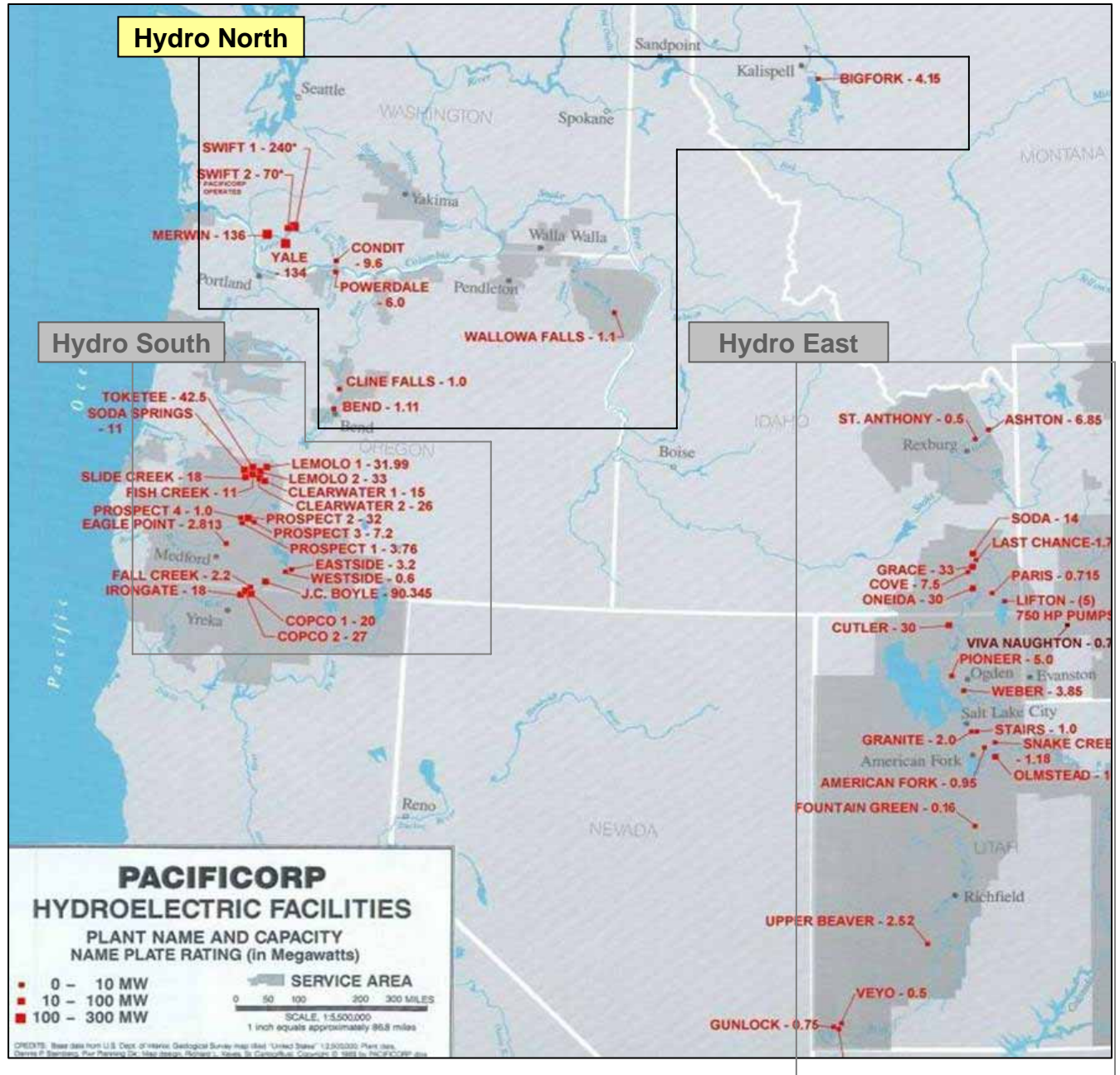
Managing Recreation Sites

**Northwest Hydroelectric Association
2007 Annual Conference**

David Moore

Hydro Resources

- 51 generating plants
- 87 units
- 1158 MW
- Across 7 states



Lewis River Hydroelectric Project



Legend	
★	Cities
—	Stream
—	Primary Road
—	Secondary Road
□	County
■	Regional Lakes
■	PacifiCorp Property
■	WA, DNR Property
■	National Forest

0 2 4 Miles



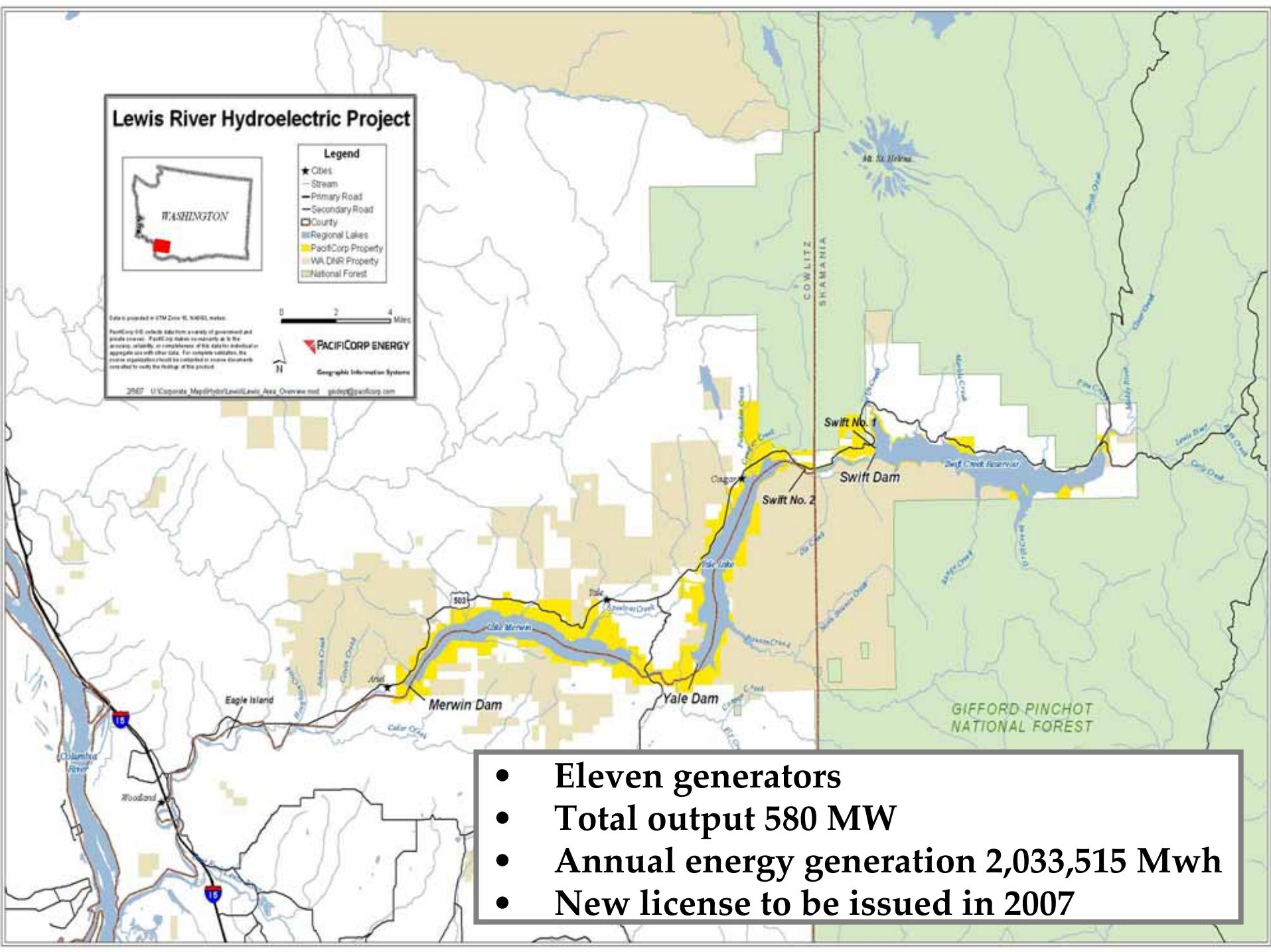
Data is provided in GTM Zone 10, NAD83, meters.

PacifiCorp GIS reflects data from a variety of government and private sources. PacifiCorp makes no warranty as to the accuracy, reliability, or completeness of this data for individual or aggregate use with other data. For complete verification, the source organization should be contacted or source documents consulted to verify the results of this product.



Geographic Information Systems

2907 U:\Corporate_Maps\Hydro\Lewis\Lewis Area Overview.mxd gdcop@pacifiCorp.com



- Eleven generators
- Total output 580 MW
- Annual energy generation 2,033,515 Mwh
- New license to be issued in 2007



Merwin Project

- Completed – 1932
- Three generators – 136 MW
- Reservoir – 14.5 miles long
- Storage – 263,000 ac-ft

Yale Project

- Completed – 1953
- Two generators – 134 MW
- Reservoir – 10.5 miles
- Storage – 190,000 ac-ft





Swift 1 Project

- Completed – 1958
- Three generators – 240 MW
- Reservoir – 11.5 miles
- Storage – 447,000 ac-ft of

Swift 2 Project

- Completed – 1958
- Rebuilt – 2006
- Two generators – 70 MW
- Power canal – 3.2 miles
- Storage – 190,000 ac-ft



Lewis River Hydroelectric Project



- Legend**
- ★ Cities
 - Stream
 - Primary Road
 - Secondary Road
 - County
 - Regional Lakes
 - PacifiCorp Property
 - WA DNR Property
 - National Forest

Data provided in USGS Data ID: N4002, notes.

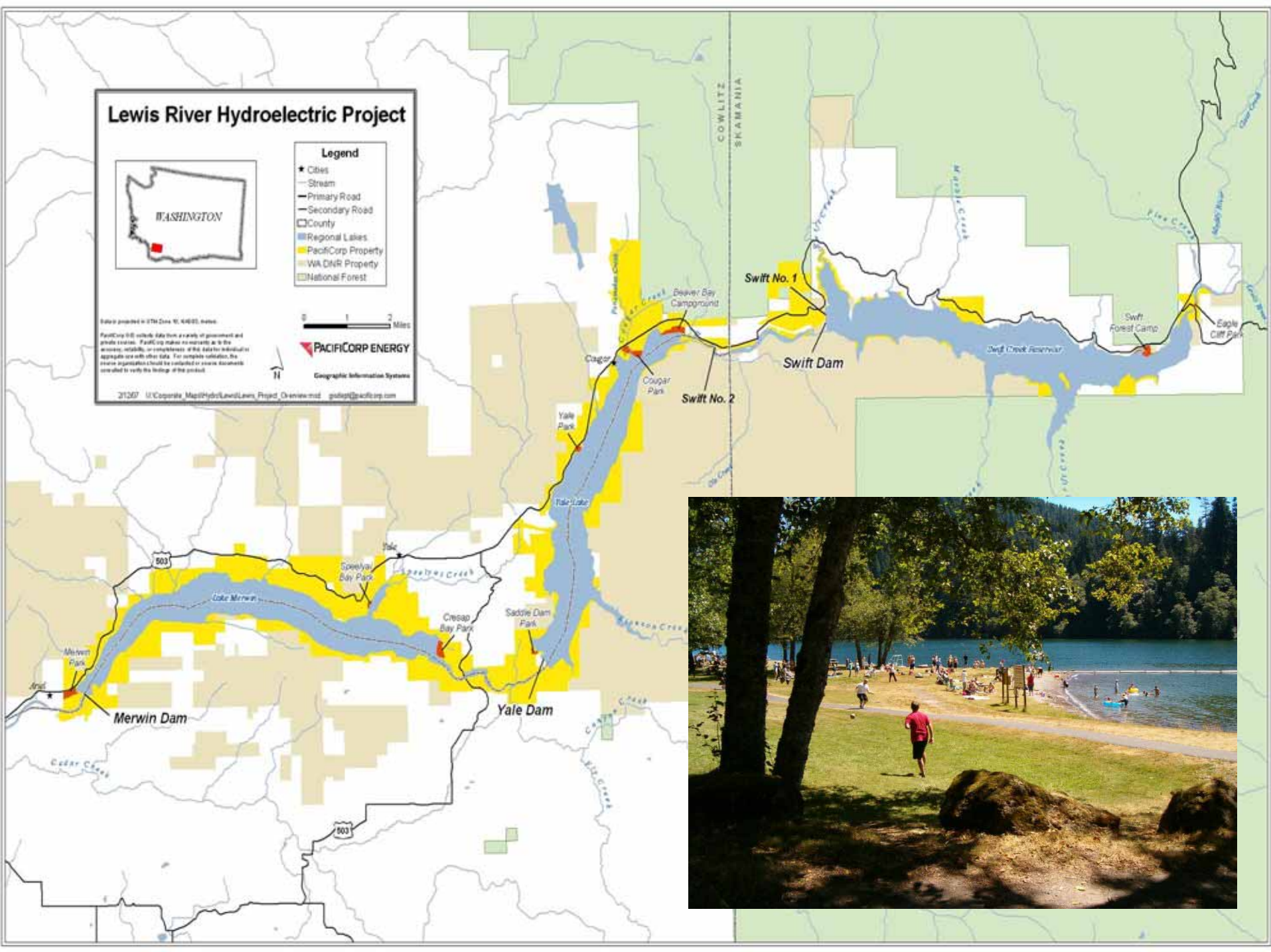
PacifiCorp GIS website data from a variety of government and private sources. PacifiCorp makes no warranty as to the accuracy, reliability, or completeness of the data for individual or aggregate use with other data. For complete validation, the source organization should be contacted or source documents consulted to verify the findings of this product.



PACIFICORP ENERGY

Geographic Information Systems

2/10/07 U:\Coporate_Maps\Hydro\Lewis_Projct_Overview.mxd gsdtp@pacifiCorp.com



Lewis River Recreation

- Nine developed recreation sites
 - Four campgrounds w/ 259 individual camp sites
 - Five day use sites
- User fees required
 - \$12 – \$15 overnight per campsite
 - \$3 parking fee per vehicle (day use)
- Approximately 500,000 per year
- Dispersed camping along reservoirs
- Most Project lands open to non-motorized public access



Intended Presentation Outcomes

- A newfound desire to tip your camp host
- There are alternative approaches to managing licensee recreation sites
- There is value in sharing these approaches in a forum such as this

Managing Lewis River Recreations Sites

- PacifiCorp took an alternative approach
- Much different than established pre-licensing practices

Under PacifiCorp Management

- Operation and maintenance (O&M) costs > \$1,000,000
- Vandalism costs > \$50,000
- Great deal of time hiring seasonal staff
- Managing personnel presence at sites
- Increase in alcohol-related incidents requiring emergency services

Initiatives to Improve the Recreation Experience

- Enhanced communication of park rules
- Initiated day use fee to reduce “cruising”
- Implemented a “no alcohol” policy
- Established a greater on-site presence to communicate and enforce initiatives

Contracted Concessionaire in 2001

- Round-the-clock presence at campgrounds and certain day use sites
- Consistent personnel at sites for law enforcement coordination
- Increased staffing during peak days
- Uniformed and identifiable staff to assist users
- Gates opened and closed at regular hours

Concessionaire Contract Elements

- Multi-year revenue sharing contract
- Reservations – PacifiCorp
- Daily O&M – concessionaire
- Capital improvements – PacifiCorp
- Why it works?
- Contract coordinator is on the project and works closely with the concessionaire

Since 2001...

- 50% reduction in annual O&M costs
- 80% reduction in annual vandalism costs
- Company resources focused on hydro operations
- No longer managing seasonal park staff
- Parks are better maintained
- Very positive feedback from park users, community, and law enforcement



Questions?



Contact:

David Moore

825 NE Multnomah, Suite 1500

Portland, OR 97232

503-813-6945

david.moore@PacifiCorp.com

Questions?

