

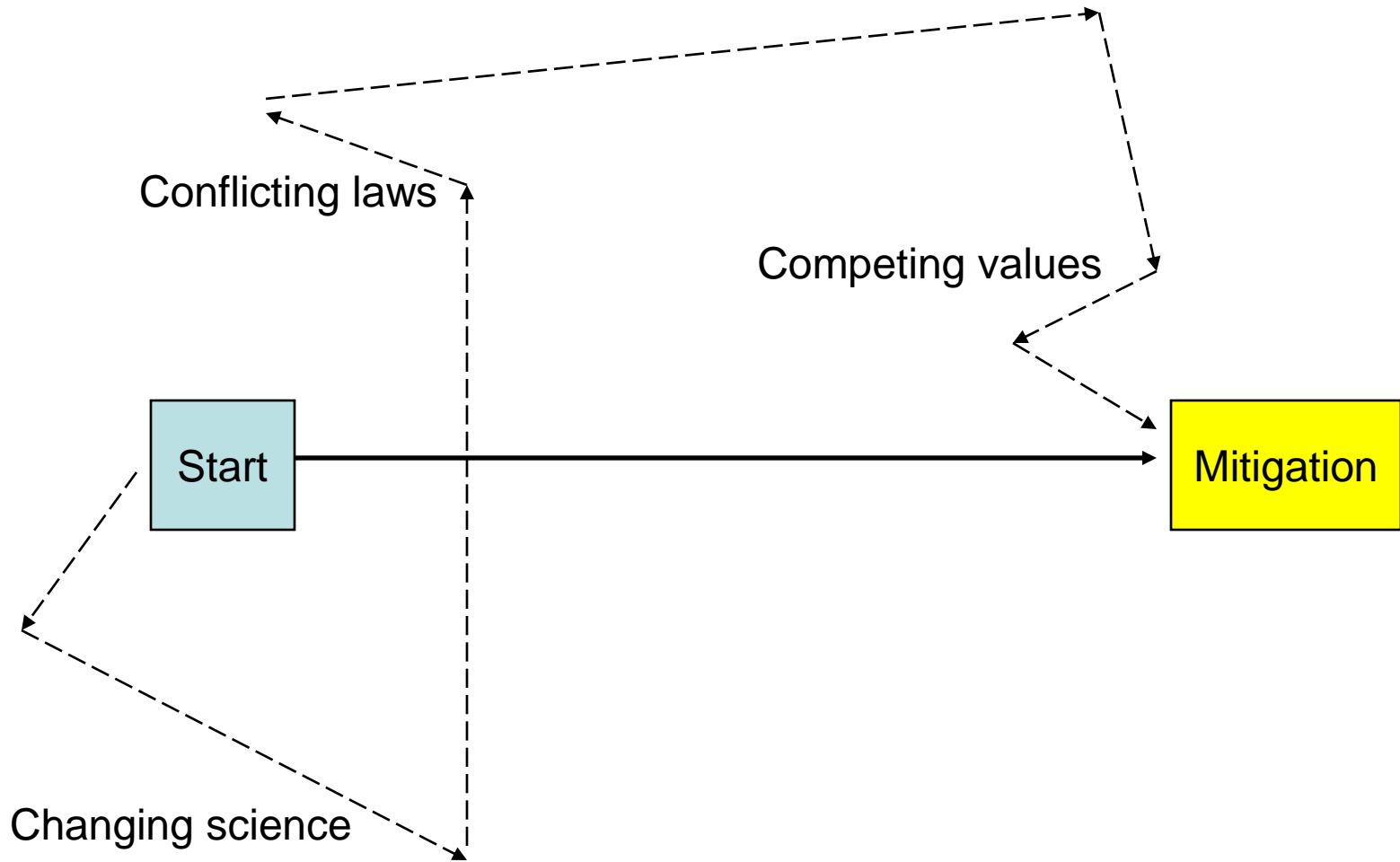
Implementing Mitigation: Challenges and Strategies from the Technical/Policy Interface

Todd Pearsons



Northwest Hydroelectric Association Conference
March 19, 2009, Portland

Goal – Getting to mitigation



Background

- University/WDFW/Grant PUD
- Science - Science/policy interface
- Hatchery mitigation

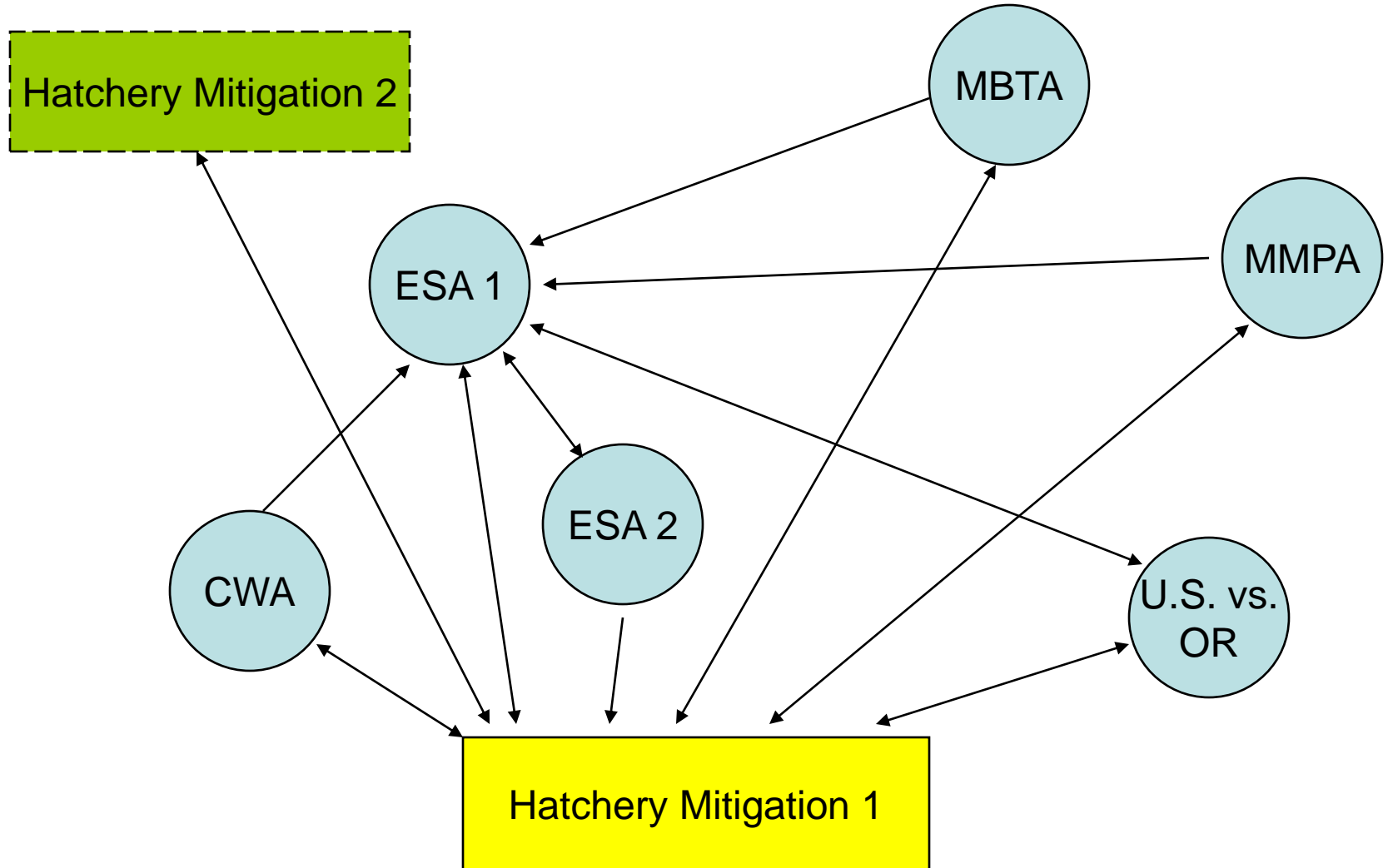


Washington
Department of
**FISH and
WILDLIFE**

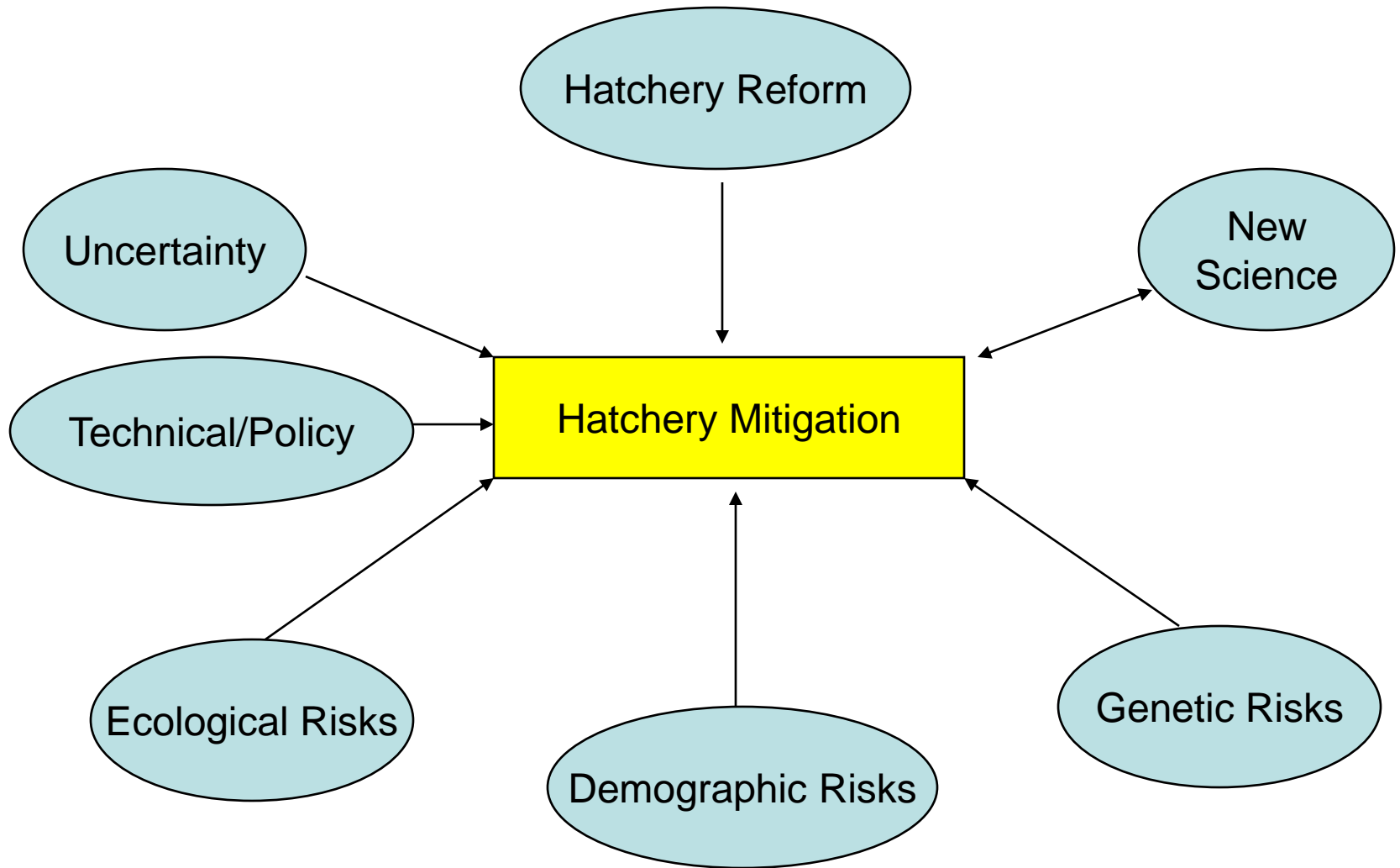
Grant PUD Mitigation (NNI)

- **Artificial production** of over 10 million fish comprised of spring, summer, and fall Chinook salmon, sockeye and coho salmon, steelhead and rainbow trout, and white sturgeon
- **Survival standards** (management of bird and fish predation, management of dissolved gases, construction of new fish bypasses, and installation of fish friendly turbines)
- **Protection flows** for Hanford Reach fall Chinook salmon
- **Habitat** enhancement and conservation

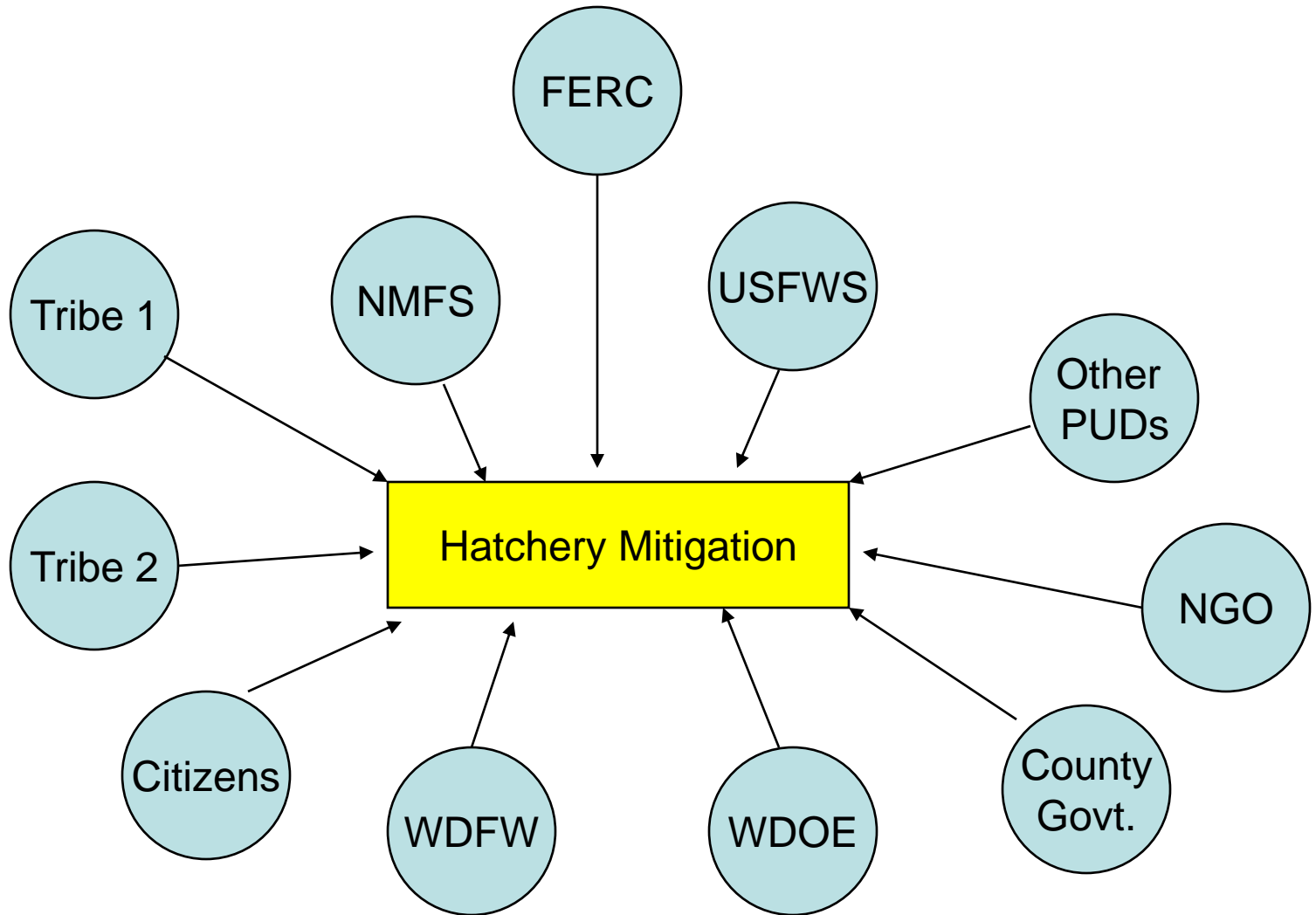
Conflicting Laws



Changing Science



Competing Values



Unclear Authorities

FERC

Joint Fishery Parties

Co-managers

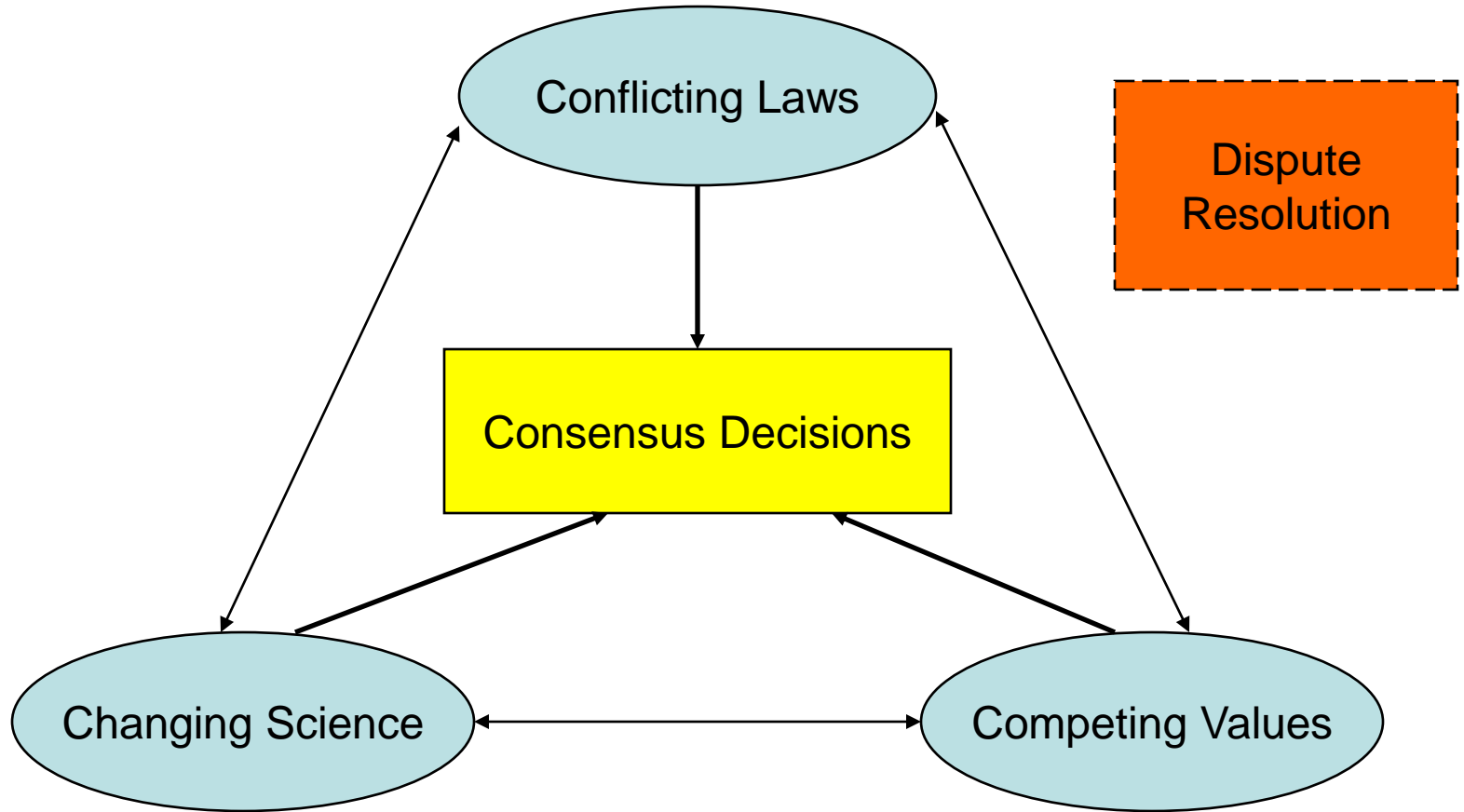
Hatchery Committee

Committee Reps

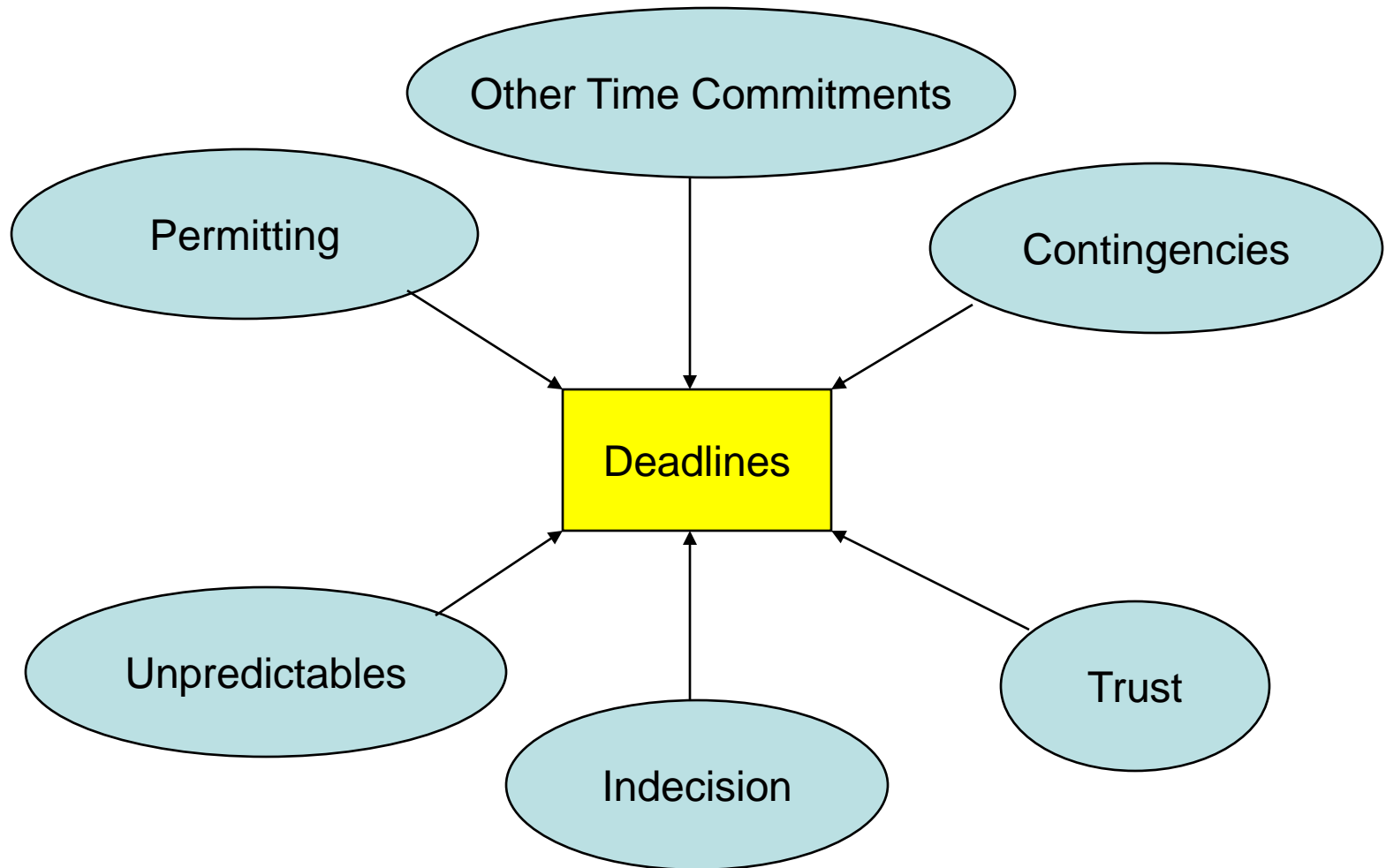
Regulators

Grant

Consensus Decisions



Difficult Deadlines



What's New?

- It is getting more difficult and likely to take longer to get to mitigation

William Stelle, Jr. – 7 myths

A speech delivered in 1997

1. Federal agencies speak with one voice
2. Science will provide the answer
3. The region wants a science-based approach
4. The region wants to solve this problem in the region
5. The states have a better plan
6. We want somebody in charge
7. We can have our cake and eat it too

Strategies/Advice

- Identify quality goals and quantitative objectives early
- Define rules, roles, and authorities early and enforce these
- Make indecision costly - Difficult decisions will rarely be made if the cost of indecision is low
- Distinguish policy from technical debates and let the right people debate
- Get the right people in the room (openness to consider alternatives)
- Build trust (transparency, accountability) and develop relationships to get through the hard stuff (field trips)
- Commit to adaptive management – because uncertainties will be large (if possible, compare alternatives)
- Design with flexibility – be able to adapt to new science and policy
- Record decisions and document rationales (minutes, technical documents, SOAs)
- Celebrate the successes

continued

- Expect it to take longer than you think so set realistic timelines