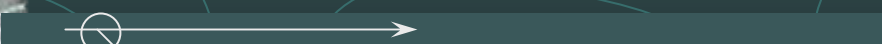




Cultural Resource Training Ideas



Northwest Hydroelectric Association
February 21, 2006

Goal – Facilitate Learning

- Segment information transmission
- Sharing
- Discussion
- Integration of ideas
- Hands-on activities

Lecture Format

● Advantages

- Familiar to most
- Presents lots of information in limited time

● Disadvantages

- Audience retains only 10-20 percent
- People drift off every 8-10 minutes

Break-Up Lecture Format

- Use attention-getting examples
- Use props and/or give prizes
- Get audience interaction
- Bring examples and/or take fieldtrips

Audience Interaction

- Ask audience to share examples
- Ask audience questions or have them pose questions
- Have audience discuss questions in small groups and report back

A vertical strip on the left side of the slide shows a portion of a topographic map with contour lines, a yellow path, and a red crosshair.

Artifacts and Fieldtrips

- Provide artifact or other examples to handle and discuss
- Use fieldtrips to visit sites



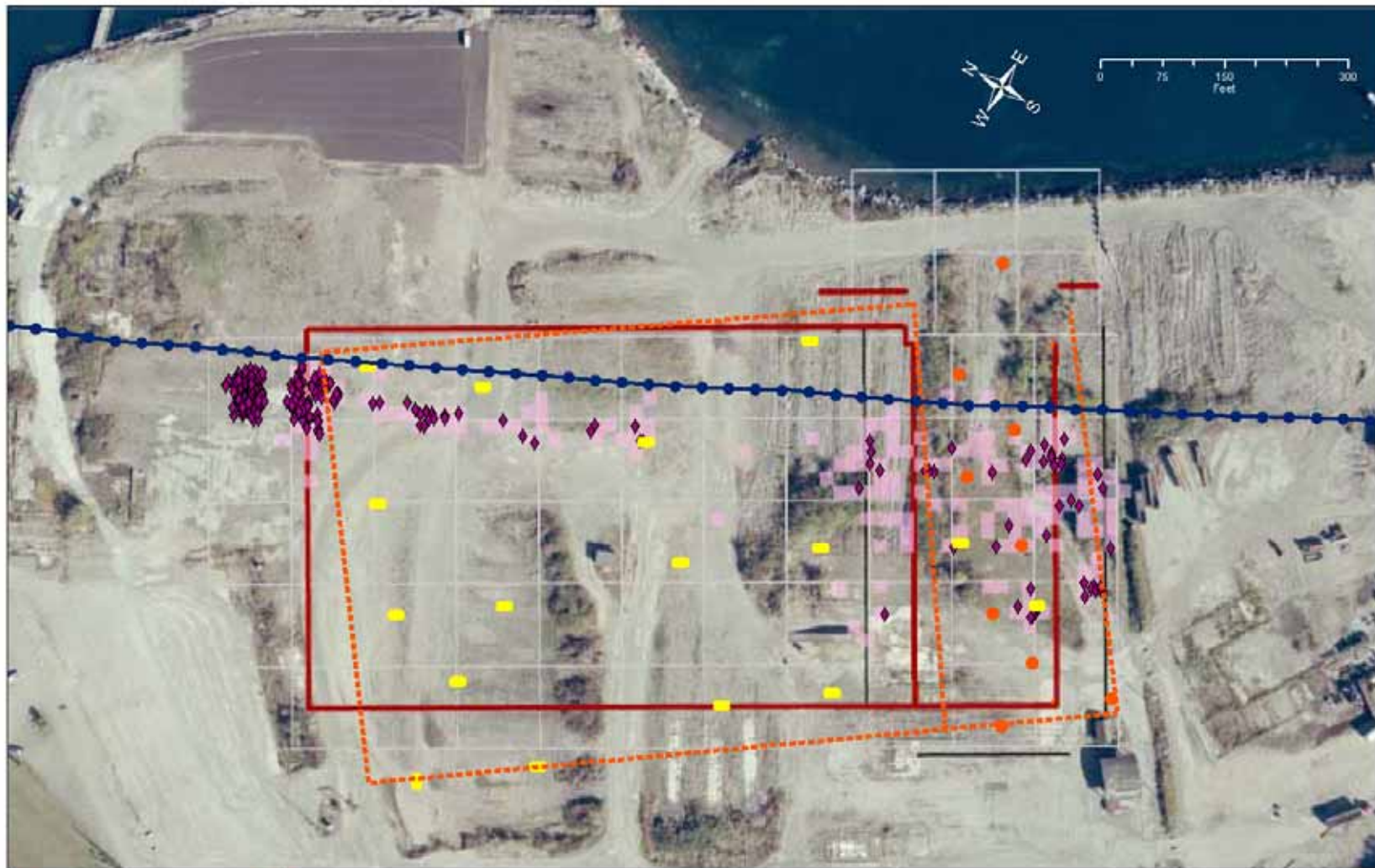
WSDOT Port Angeles Graving Dock – What Happened

- What problems with archaeology did this project experience?
- What was the result of the problems?
- What caused the problems?



WSDOT Port Angeles Graving Dock – Problems

- Hurried archaeological survey
- Buried village site and 300+ burials
- Strained tribal relations
- Loss of \$80M and 2 years on bridge



- ◆ Intact Burials Yet to be Discovered
- Backhoe Trench Sample
- ◆ General Location of Fragmentary Human Remains Yet to be Discovered
- - - Sampling Plan Sheet Pile (Approximate)
- Sheet Pile
- Historic Shoreline (Approximate)

Data Sources / Notes -
Site Features:
Orthophoto:
Burial:

Human Remains Vicinities:

Archaeological Sampling

WSDOT Project Office 2/29/2005
WSDOT 10/15/2002
Larson Anthropological and Archeological Services, Ltd 3/2/2005
and Western Shore Heritage Services 2/22/2005
Based on findings to 12/7/2004 from Larson Anthropological and Archeological Services, Ltd and Western Shore Heritage Services. (Fossils found in stockpiles were not mapped.)
WSDOT Project Office 2/29/2005

Nov / Dec 2002 Archeology Sampling
Hood Canal Bridge Graving Dock Site
Port Angeles, Washington

Photo Date: Oct 15, 2002